

# PEACH C

peachc.kr  
SYCS Co., Ltd.

This material is proprietary to PEACH C, and prepared for the use of our client, it is not to be relied on by and 3rd part without PEACH C's prior written consent  
본 문서는 지정된 수신인만을 위한 것으로 저작권 관련 법령의 보호를 받습니다. 본 문서에 포함된 정보의 전부 또는 일부를 무단으로 제 3자에게 공개, 배포, 복사 또는 사용하는 것은 엄격히 금지됩니다.

BRAND KEY WORD

#ICONIC  
#HIP  
#LOVELY

# PEACH C

The global interest in K-beauty continues to grow, and the demand for domestic beauty products is gradually shifting to younger age groups, causing the market value of K-beauty to rise steadily.

Amid this market landscape, Peach C is evolving into a trendy makeup brand for the 1020 generation, centered around three key elements: **fruity color palettes, iconic product shapes, and concepts that consumers can truly immerse in,** all while enhancing their natural charm.

## FIND YOUR LOVELINESS, PEACH C

A makeup brand brimming with sweetness

Peach C will help you discover your own lovable charm.

---

2018. 05. 15  
Brand Launching



BRAND POSITIONING

*espoir*

**CLIO**  
PROFESSIONAL

*rom&nd*

  
**ETUDE**

HIGH PRICE

*dasique*



**PEACH C**

UNDERSTATED

ICONIC

***lilybyred***

***peripera***

***colorgram***

LOW PRICE

**PEACH C**



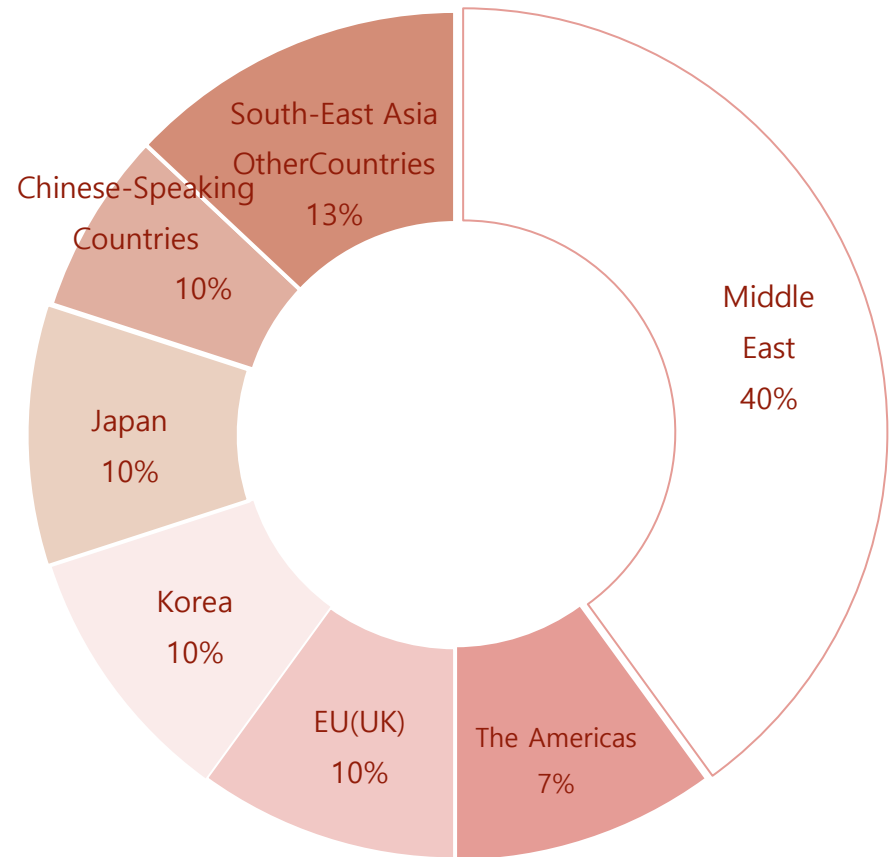
# SALES STATUS



## DISTRIBUTION SALES STATUS

Building on its growth in the domestic market, Peach C has expanded into multiple countries worldwide, evolving into a **global brand**.

It is experiencing explosive growth to establish itself as a leading K-Beauty brand.



Peach C is using the **Japanese market** as a major stepping stone to expand into various countries worldwide, moving towards becoming a global brand.



# DISTRIBUTION SALES STATUS

JAPAN (OFF LINE)

OFF LINE

Variety Channel

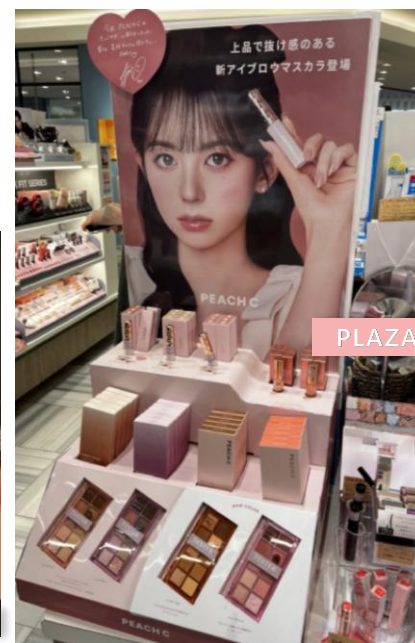
LOFT

@COSME

PLAZA

HANDS

SHOP IN

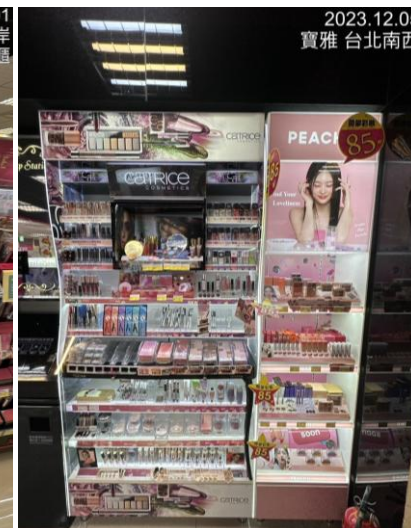


PLAZA



POYA

More than 300 stores  
in Taiwan's  
largest health and  
beauty (H&B) channel.



## DISTRIBUTION SALES STATUS

## MIDDLE EAST, SOUTHEAST ASIA (OFF LINE)

The Middle East will continue to operate promotional stores, with plans for further offline expansion. Approximately 200 beauty specialty stores are expected



MIDDLE EAST PROMOTION STORE

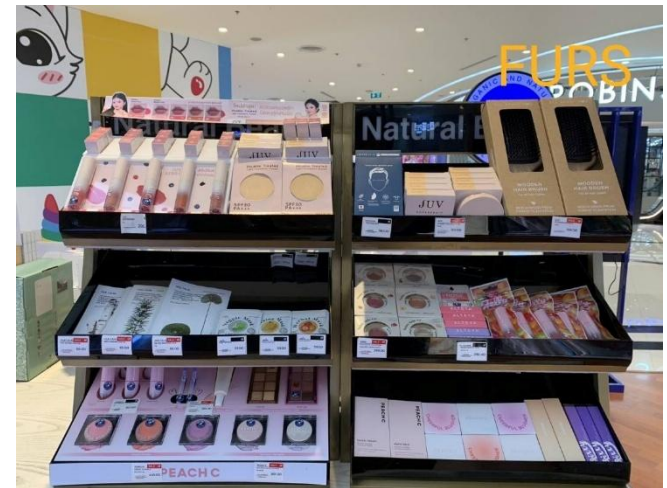


SOUTH-EAST ASIA

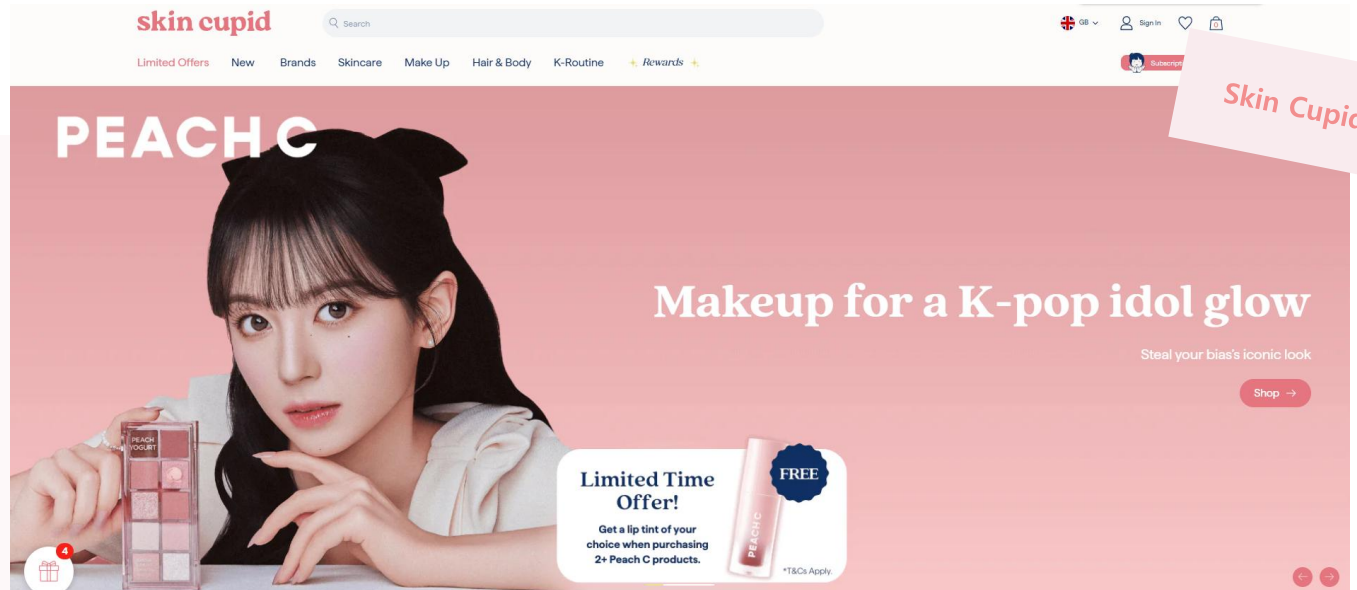


Major Health & Beauty  
Distribution Channels  
in Thailand

EVEANDBOY  
CASLTE C  
ALL ABOUT YOU



Launch of Skin Cupid,  
The Leading K-Beauty Platform  
In the UK(25.08)





Health & Beauty  
Online Distribution Channels  
in Turkey

TRENDYOL

trendyol

Aradığınız ürün, kategori veya markayı yazınız

İndirim Kuponlarım Trendyol'da Seti Yap Hakkımızda Yardım & Destek

Giriş Yap Favorilerim Sepetim

TÜM KATEGORİLER Kadın Erkek Anne & Çocuk Ev & Yaşam Süpermarket Kozmetik Ayakkabı & Çanta Elektronik Çok Satanlar Fiaş Ürünler

PEACH C PeachC Turkey 9.8 Satıcı Profili Hızlı Satıcı

Takip Et Kazan 5,48 Takipçi

Ana Sayfa Tüm Ürünler Mağazada Ara

Kore'den Gelen Güzellik  
Peach C Türkiye'de!







PEACH C TEMİZ GÜZELLİK

Temiz İçerik Vegan Hayvan Dostu

Sürdürülebilir Etik Üretim MADE IN KOREA

En Çok Tercih Edilenler

Tümünü Gör

<p>BUGÜN KARGODA</p> <p>KARGO BEDAVA</p>  <p>Made in Korea</p> <p>Peach C Peach Glow Makeup Base - Nemlendirici &amp; Işıltılı In...</p> <p>4.7 ★★★★★ (32)</p> <p>539 TL</p> <p>Kupon Fırsatı Birlikte Al Kazan</p>	<p>BUGÜN KARGODA</p> <p>KARGO BEDAVA</p>  <p>Made in Korea</p> <p>Peach C Jelly Beam Tint - Nemlendirici Dudak Parlatıcı...</p> <p>4.8 ★★★★★ (19)</p> <p>499 TL</p> <p>Kupon Fırsatı Birlikte Al Kazan</p>	<p>BUGÜN KARGODA</p> <p>KARGO BEDAVA</p>  <p>Made in Korea</p> <p>Peach C Blurry Filter Tint Lip To Cheek - Dudak &amp; Yanak...</p> <p>4.6 ★★★★★ (31)</p> <p>599 TL</p> <p>Kupon Fırsatı Birlikte Al Kazan</p>	<p>HIZLI TESLİMAT</p> <p>KARGO BEDAVA</p>  <p>Made in Korea</p> <p>Peach C Focus On Air Velvet Cushion - Doğal Ve Pürüzsüz...</p> <p>5.0 ★★★★★ (2)</p> <p>899 TL</p> <p>Kupon Fırsatı Birlikte Al Kazan</p>	<p>BUGÜN KARGODA</p> <p>KARGO BEDAVA</p>  <p>Made in Korea</p> <p>Peach C Champagne Eyegitter - Göz Farı &amp; Sımsıkı Likit...</p> <p>5.0 ★★★★★ (2)</p> <p>599 TL</p> <p>Kupon Fırsatı Birlikte Al Kazan</p>	<p>BUGÜN KARGODA</p> <p>KARGO BEDAVA</p>  <p>Made in Korea</p> <p>Peach C Doğa</p> <p>4.8 ★</p> <p>Kupon Fırsatı Birlikte Al Kazan</p>
---	--	---	---	---	--

Secured presence in 50 drugstores across the U.S., with an additional 30 new stores scheduled to open in August 2024



# DISTRIBUTION SALES STATUS

# MERICAS & MIDDLE EAST (ON LINE)

THE AMERICAS  
AMAZON /  
YESSTYLE



amazon Deliver to Republic of Korea All PEACH C

Long-lasting Charm: Eye Makeup Primer \$20.00 \$22.00

Back to search results for "PEACH C"

**Peach C Seasonal Blending Eyeshadow Palette | Eye-Catching Eye Palette Makeup Hues for Everyday Use| Multi-Functional Eye Shadow Palette Makeup Shades| Lasting Makeup Eyeshadow MAUVE WAVE 0.43 ft oz**

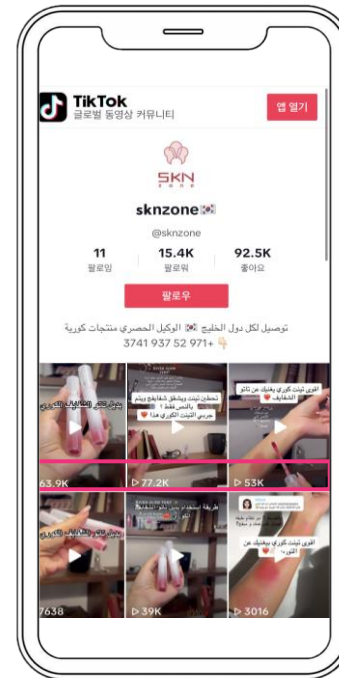
Visit the Peach C Store  
4.5 ★★★★★ 79 ratings | Search this page

\$25.99

No Import Charges & \$6.42 Shipping to Republic of Korea Details

Color: Mauve Wave

Color: Mauve Wave  
Brand: Peach C  
Finish Type: Matte  
Coverage: Medium  
Item Form: Powder



MEDDLE EAST  
SKN ZONE



Expanding channels in  
the Americas and Middle East markets

## DISTRIBUTION SALES STATUS

DOMESTIC (OFF LINE)

JEJU HYATT HOTEL  
DREAM BEAUTY



JEJU JTO  
DUTY FREE



THE SHILLA  
duty free

LOTTE  
DUTY  
FREE

SHINSEGAE  
D U T Y F R E E

DUTY  
FREE HYUNDAI  
DEPARTMENT STORE

JEJU DUTY FREE  
제주관광공사 인터넷매세점

BRAND I

ESM

coupang

zigzag

MUSINSA

A B L Y

NAVER

Powder Room

unpa.

SKINRx

10X10



# MKT STATUS



## History of Advertising

2022

VIVIZ EUNHA



2023-2024

IVE RAY



2024-2025

MADEIN MASHIRO



Launch Showcase



Promotion  
(TOKYO IN JAPAN)



Promotion  
(TOKYO IN JAPAN)



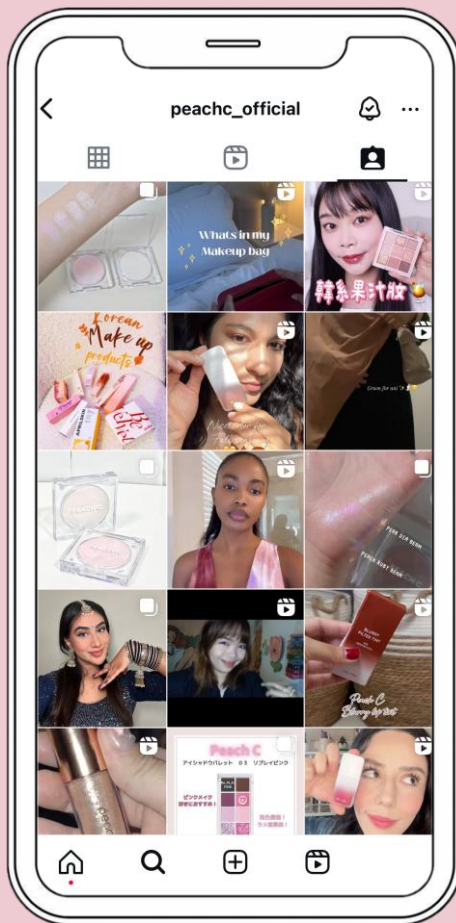
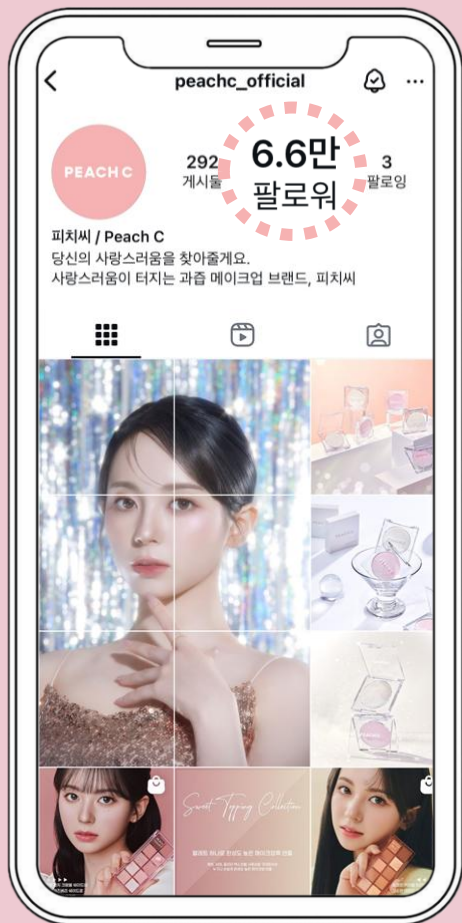
Outdoor Advertising  
(TOKYO, OSAKA)

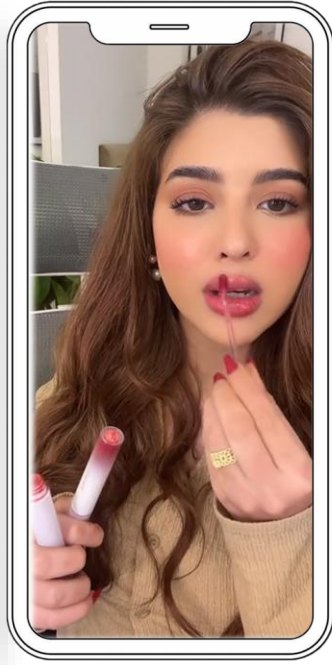
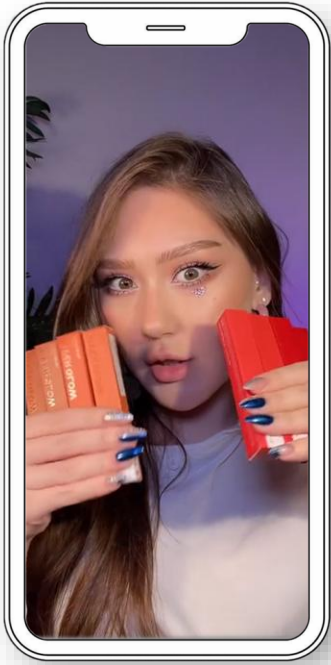


Promotional Stand Operation  
700 stores including LOFT and @COSME,ETC

Limited Edition Product  
Launch Showcase







<p>Siêu phẩm Phần Má Ngọt ngào cuốn hút ▶ 1.9M</p>	<p>PEACH C Chì kè mát ▶ 609.7K</p>	<p>Xinh đẹp cùng Peach C Ngọt ngào siêu an tượng ▶ 981.3K</p>	<p>#makeupbase ▶ 182.6K</p>	<p>Eye Makeup ▶ 306.5K</p>	<p>#lipsticktutorial ▶ 21.1K</p>
<p>Một lớp trang điểm ▶ 386.7K</p>	<p>@sknzonekr ▶ 6.5M</p>	<p>Một thời son phù hợp ▶ 1.1M</p>	<p>▶ 1.9M</p>	<p>#peachglowmakeup ▶ 118.1K</p>	<p>#burmese ▶ 1864</p>
<p>▶ 114K</p>	<p>▶ 108.4K</p>	<p>▶ 114.2K</p>	<p>PEACH C ▶ 874.2K</p>	<p>#makeuptutorial ▶ 1983</p>	<p>Peach C Carrot Blusher ▶ 755</p>
<p>Replying to @Ab ▶ 9.4M</p>	<p>#makeup #foyou ▶ 4.3M</p>	<p>▶ 107.8K</p>	<p>SON THỜI PEACH C GIÚP ▶ 620.6K</p>	<p>PEACH C CHEERFUL BLUSHER ▶ 112.1K</p>	<p>▶ 185.5K</p>
<p>Để đôi môi càng mọng, ▶ 107.8K</p>	<p>Son thời Peach C giúp ▶ 620.6K</p>	<p>Team mê má hồng đã ▶ 112.1K</p>	<p>▶ 185.5K</p>	<p>▶ 4M</p>	<p>Full Makeup Look ▶ 11.3K</p>



\*민카롱(23.8k)



\*최모나choimona(29.3k)



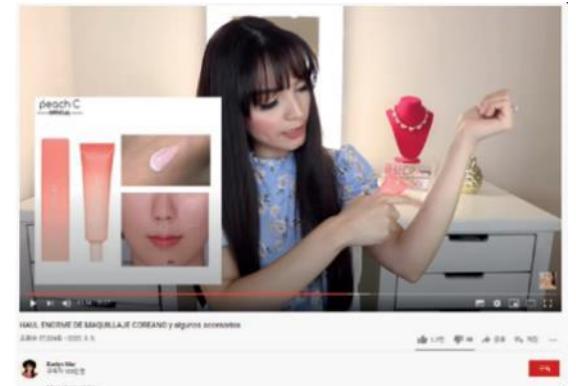
\*웨이체널way channel (17.7k)



\*FURUKAWA YUKA (82k)



\*MARUYAMA REY (85k)



\*KOL Evelyn Mar (109k)



# PRODUCT INTRODUCTION



BEST PRODUCT

NEW



JELLY BEAM TINT

HIT



CHEERFUL BLUSHER

HIT



RIVER GLOW TINT

HIT



PEACH GLOW MAKE UP BASE

PRODUCT MAP

Total 45 SKU

BASE (5)



AIR VELVET CUSHION (2)



PEACH GLOW MAKE UP BASE (1)



BEIGE GLOW MAKE UP BASE (1)



TONE UP SUN BASE (1)

CHEEK (7)



DUAL HIGHLIGHTER (2)



BLUSHER (5)

EYE (12)



EYESHADOW PALETTE (4)



EYE GLITTER (3)



PENCIL EYE LINER (3)



BRUSH EYE LINER (2)

LIP (21)



BLUR TINT (5)



VELVET LIPSTICK (7)



JELLY TINT (5)



GLOW LIP TINT (4)

# PRODUCT MAP

Total 45 SKU

## BASE (5)



AIR VELVET CUSHION (2)



PEACH GLOW MAKE UP BASE (1)



BEIGE GLOW MAKE UP BASE (1)



TONE UP SUN BASE (1)

## CHEEK (7)



DUAL HIGHLIGHTER (2)



BLUSHER (5)

## EYE (12)



EYESHADOW PALETTE (4)



EYE GLITTER (3)



PENCIL EYE LINER (3)



BRUSH EYE LINER (2)

## LIP (21)



BLUR TINT (5)



VELVET LIPSTICK (7)



JELLY TINT (5)



GLOW LIP TINT (4)



# BASE MAKE UP



## PRODUCT INTRODUCTION

### BACE MAKE UP

#### PEACH FOCUS ON AIR VELVET CUSHION

Focus on flawless coverage!

Lightly adheres to the skin,

blending seamlessly to create a smooth, velvet-like texture.



NAME	PEACH C Focus On Air Velvet Cushion	CATEGORY	FOUNDATION
PRICE	22,000	NET WEIGHT	15 g
COLOR	01 Ivory 02 Beige	EXPIRATION DATE	36 M before opening 12 M after opening
TEXTURE	Liquid cushion foundation with a refreshing finish	SKIN TYPE	Combination, Dehydrated oily Skin
KEY INGREDIENTS	Whitening, wrinkle improvement, and sun protection with triple functionality (SPF 50 + , PA ++++)		
DESCRIPTION	<b>Thin yet powerful, air-like and ultra-adhering airy fixing</b> With a 5-layer fitting system that offers strong long-lasting wear, it sticks fresh and securely in place!		
	<b>It carefully fills in the gaps between pores and uneven texture, covering them for a smooth finish.</b> No clumping, even with multiple layers, giving a clean and flawless skin texture as if it's your natural skin.		
	<b>Containing 60% moisture essence, it provides a tight base with no worry of flaking.</b> 16 types of skincare ingredients maintain moisture deep inside the skin, offering a comfortable, water-like velvet texture without dryness.		
HOW TO	Use the built-in puff to take an appropriate amount of product and apply it evenly on the skin		
KEY WORDS	#FlawlessCoverage #PerfectFitCoverage #SoftOnTheOutsideSmoothOnTheInside #AiryFixing		



## PRODUCT INTRODUCTION

### BACE MAKE UP



## PRODUCT INTRODUCTION

### BACE MAKE UP

#### PEACH GLOW MAKE UP BASE

Hydrates and creates a peachy glow



NAME	PEACH C Peach Glow Make Up Base	CATEGORY	MAKE UP BASE
PRICE	12,000	NET WEIGHT	35 ml
COLOR	White color infused with fine pink pearls	EXPIRATION DATE	36 M before opening 12 M after opening
TEXTURE	Moisturizing glow texture	SKIN TYPE	Dry, Dehydrated oily skin
KEY INGREDIENTS	Squalane, rich extract, peach extract, meadowfoam seed oil.		
DESCRIPTION	<b>Moisturizing base that keeps the skin hydrated.</b> The aqua gel formula lightly adheres to the skin, creating a radiant complexion.		
	<b>Smooth and flawless skin expression without accentuating dry patches.</b> Moisture polymer fills in pores for a smooth, even texture.		
	<b>Brightens the skin with fine, lightweight smart powder</b> Enhances skin radiance, creating a natural and subtle peachy glow		
HOW TO	Apply to areas where you want to add a glow before foundation for a radiant, glowing complexion		
KEY WORDS	#PeachyGlow #PinkRadiance #MoistureBase		



## PRODUCT INTRODUCTION

### BACE MAKE UP

#### BEIGE GLOW MAKE UP BASE

Creates a transparent and subtle pearl-like glow,  
as if it's your own skin



NAME	PEACH C Beige Glow Makeup Base	CATEGORY	MAKE UP BASE
PRICE	12,000	NET WEIGHT	35 ml
COLOR	Beige color infused with fine pink pearls	EXPIRATION DATE	36 M before opening 12 M after opening
TEXTURE	Moisturizing glow texture	SKIN TYPE	Dry skin
KEY INGREDIENTS	Pantheon, mica, peach extract, rich extract.		
DESCRIPTION	<b>Hydrates the skin with a moisture-rich base, keeping the complexion fresh and dewy</b> The aqua gel formula gently adheres to the skin, creating a dewy and radiant complexion.		
	<b>Creates a smooth and flawless complexion without accentuating dry patches</b> Moisture polymers fill in pores, providing a smooth and even texture without unevenness		
	<b>A transparent and subtle pearl-like glow, as if it's your natural skin, gently radiating</b> Beige color infused with fine pearl particles, providing a natural tone-correcting effect.		
HOW TO	Apply to areas where you want to add a glow before foundation to create a peachy radiant complexion.		
KEY WORDS	#PearlGlow #NaturalToneCorrection #ShimmerPearlBase		



## PRODUCT INTRODUCTION

### BACE MAKE UP



## PRODUCT INTRODUCTION

### BACE MAKE UP

#### PEACH TONE UP SUN BASE

Achieves a soft, peach-filtered finish with a brightened, fresh tone-up



NAME	PEACH C Tone Up Sun Base	CATEGORY	Tone up Base
PRICE	18,000	NET WEIGHT	50 ml
COLOR	Peachy ivory color	EXPIRATION DATE	36 M before opening 12 M after opening
TEXTURE	Firm cream texture with a refreshing finish	SKIN TYPE	모든 피부
KEY INGREDIENTS	SPF 50+ , PA++++ , Whitening Functionality, Dermatologically Tested Peach Extract"		
DESCRIPTION	<b>Achieves a clean and radiant tone-up, as if corrected with a filter.</b> Pink-toned base that naturally brightens the skin's radiance		
	<b>Contains primer properties for a smooth, seamless fit without clumping</b> The lightweight texture adheres seamlessly, filling in pores and uneven texture for a smooth, refined skin surface		
	<b>Peach extract and pink vitamin for a vitality boost and brightening care.</b> Helps improve skin tone, providing a brightening effect from within for a radiant complexion		
HOW TO	Use as the first step of makeup to enhance adherence, and as the next step to touch up your makeup		
KEY WORDS	#PeachToneUpCream #PinkToneUp #VitalityAdherence #FoundationFree		





# CHEEK MAKE UP



## PRODUCT INTRODUCTION

### CHEEK MAKE UP

#### CHEERFUL BLUSHER

One touch to recharge your vitality! Cheer up



NAME PEACH C Cheerful Blusher

PRICE 15,000

COLOR 01 Lycheeful 02 Peachful 03 Mangoful  
04 Carrotful 05 Mulberryful

TEXTURE Pressed powder

CATEGORY Blusher

NET WEIGHT 4g

EXPIRATION DATE 36 M before opening  
12 M after opening

SKIN TYPE All skin type

**Vivid pigmentation that enhances your complexion as if adding a splash of color, boosting vitality.**  
Fine powder pigments that deliver the true color of the blush with just one touch, providing vivid and even application

**A soft blending texture that harmonizes gently with your natural flush**  
With a silicone oil coating for excellent adherence, it applies smoothly and evenly without clumping, even when applied with finger

**Create a soft, velvety heart zone with priming powder for a flawless, smooth finish**  
Adheres evenly between pores and fine lines, maintaining the initial color for a long-lasting powdery finish



DESCRIPTION

HOW TO

Lightly dip the brush into the product and apply smoothly from the inside to the outside of your cheeks, like painting a watercolor.

KEY WORDS

#SoftFurBlurring #VitalityBooster #SoftBlending



## PRODUCT INTRODUCTION

### CHEEK MAKE UP

#### DUAL BEAM HIGHLIGHTER

Contains two types of pearls to create a multidimensional, contoured look with radiant depth!

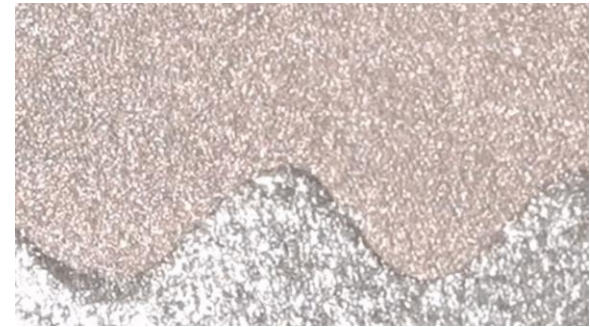


NAME	PEACH C Dual Beam Highlighter	CATEGORY	Highlighter
PRICE	25,000	NET WEIGHT	4.8g
COLOR	Pear Dia Beam Peach Ruby Beam	EXPIRATION DATE	36 M before opening 12 M after opening
TEXTURE	Baked powder Shimmer + Glitter	SKIN TYPE	All skin type
DESCRIPTION	<p><b>Create the desired contours and dimension with dual colors</b> Contains two shades to create a variety of radiant skin looks, tailored to your desired glow</p> <p><b>Luxurious and natural radiant glow effect</b> Baked using a method that incorporates pearl powder with excellent light reflection and refraction, along with emulsion oil. This results in dense pigmentation and a comfortable, moisturizing feel on the skin</p> <p><b>A multi-use item</b> A multi-use item that can be used not only for facial contouring but also for cheek and eye makeup</p>		
HOW TO	<p>Use your finger or a brush to take an appropriate amount and gently touch the areas where you want to add a glow</p>		
KEY WORDS	#DimensionalGlow #DualColor #RadiantBeam		



## PRODUCT INTRODUCTION

### CHEEK MAKE UP





# EYE MAKE UP




## PRODUCT INTRODUCTION

### EYE MAKE UP

#### SEASONAL BLENDING EYESHADOW

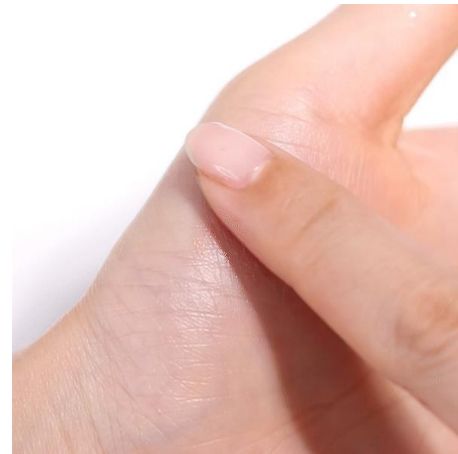
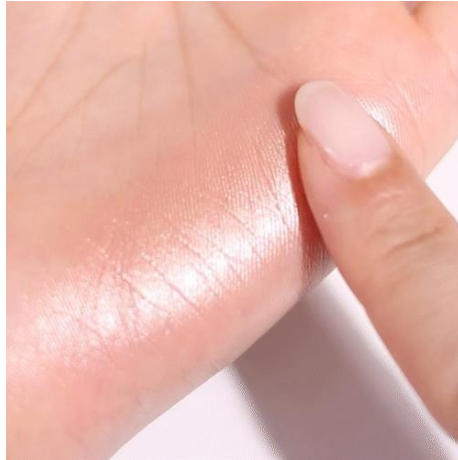
A personal tailored-fit shadow palette that enhances your natural vibe



NAME	PEACH C Seasonal Blending Eyeshadow Palette	CATEGORY	Eye shadow
PRICE	30,000	NET WEIGHT	01 : 7.7g , 04 : 6.4g 05 : 9.8g, 06 : 9.4g
COLOR	01 Sunset Grass 04 Sunlit Citrus 05 Nutty Milk 06 Peach Yogurt	EXPIRATION DATE	36 M before opening 12 M after opening
TEXTURE	Pressed powder Shimmer + Matte + Glitter	SKIN TYPE	All skin type
DESCRIPTION	<b>Easy choice! A color tutorial that's easy to follow at a glance</b> With a clear layout of shades, no need to worry about combinations!		
	<b>A tailored-fit color palette with no wasteful shades</b> Filled with colors you'll reach for every day, a curated selection that fits your eyes perfectly		
	<b>From dimensional glitter to soft, touchable textures!</b> Shade colors that layer smoothly without heaviness, along with a variety of glitter options.		
			
HOW TO	Take an appropriate amount of the product and gently apply it to the eyes.		
KEY WORDS	#EasyLayering #SoftTouch #MuteShades		

## PRODUCT INTRODUCTION

### EYE MAKE UP



## PRODUCT INTRODUCTION

### EYE MAKE UP

#### CHAMPAGNE EYE GLITTER

Glitter that adds a sparkling touch to your eye makeup,  
like champagne!



NAME	PEACH C Champagne Eye Glitter	CATEGORY	Eye shadow
PRICE	13,000	NET WEIGHT	3.5g
COLOR	01 Pure White 02 Valentine Pink 03 Rosé Coral	EXPIRATION DATE	36 M before opening 6 M after opening
TEXTURE	Liquid glitter	SKIN TYPE	All skin type
DESCRIPTION	<p><b>Natural elegance with hexagonal glitter particles nestled in subtle pearl</b> Enhance with large mother-of-pearl glitter added to a shimmer pearl base for a vibrant, multidimensional effect</p> <p><b>Long-lasting radiance with a moisturizing base, providing a smooth finish without irritation</b> Water-based formula that adheres smoothly and moisturizes without any fallout of glitter</p> <p><b>Glitter that shines differently from every angle, making each day feel new and fresh</b> Effortlessly tap and apply! Instantly creates a glamorous mood wherever you apply it.</p>		
HOW TO	Take an appropriate amount and gently apply it to the eyes		
KEY WORDS	#BigGlitter #TransparentBase #RadiantPigmentation #SuperAdhesion		

## PRODUCT INTRODUCTION

### EYE MAKE UP

#### SLIM WATERPROOF FIXXYLINER

With a 2mm ultra-slim line, it glides on smoothly and locks in place on your eyes!



NAME	PEACH C Slim Waterproof Fixxyliner	CATEGORY	Eye liner
PRICE	8,900	NET WEIGHT	0.14g
COLOR	01 Black 02 Deep Brown 03 Soft Brown	EXPIRATION DATE	36 M before opening 6 M after opening
TEXTURE	Pencil eyeliner	SKIN TYPE	All skin type
DESCRIPTION	<p><b>Create delicate lines, even at the outer corners, with an ultra-slim design</b> Create a flawless, precise line like a professional with a 2mm line for intricate detail!</p> <p><b>Smooth, creamy texture for effortless sliding application and rich pigmentation</b> Color-intense powder delivers a seamless, bold sliding application with no hesitation!</p> <p><b>Quick-dry gel base that sets instantly for a perfect finish as soon as applied!</b> Fixes in just 15 seconds, staying in place and maintaining the original pigmentation for long-lasting wear!</p> <p><b>Zero smudge worry with a silicone fixer film that locks everything in place!</b> Non-irritating silicone fixer forms a film layer, keeping your look clean and flawless all day long.</p>		
HOW TO	Pull out about 2mm of product and gently apply it to the eye area		
KEY WORDS	#SuperStrongWaterproof #2mmUltraSlimPencil #CreamyTexture		

## PRODUCT INTRODUCTION

### EYE MAKE UP



## PRODUCT INTRODUCTION

### EYE MAKE UP

#### BRUSH FIXXYLINER

Stays bold and vibrant all day,  
locking in the original color without fading!



NAME	PEACH C Brush Fixxyliner	CATEGORY	Eye liner
PRICE	12,000	NET WEIGHT	0.5g
COLOR	01 Black Brown 02 Brown	EXPIRATION DATE	36 M before opening 6 M after opening
TEXTURE	Brush eye liner	SKIN TYPE	All skin type

#### Super strong waterproof formula, zero smudge worries

Long-lasting waterproof formula with a light film-forming technology for all-day wear

#### With an ultra-fine brush, create a slim and precise line

With a soft and elastic brush pen, create sharp and precise lines with attention to detail!

#### Clear, one-touch pigmentation with no gaps or streaks

With a micro-filter device, the ink applies evenly, making it easy for anyone to use

#### Dries down naturally without shine, maintaining a smooth and matte finish

Fine pigment particles seamlessly adhere to the skin, providing a smooth application without any shimmer

#### DESCRIPTION

#### HOW TO

1. Shake 2-3 times before use, then apply along the lash line.
2. If powder, foundation, eyeshadow, or other residues are on the brush, wipe it off with a tissue..

#### KEY WORDS

#Waterproof #OneTouchPigmentation #LongLasting #UltraFineBrush



# LIP MAKE UP



## PRODUCT INTRODUCTION

### LIP MAKE UP

#### JELLY BEAM TINT

A tint that delivers a jelly-like, plump volume with a glossy finish, just like biting into a jelly!



NAME	PEACH C Jelly Beam Tint	CATEGORY	Tint
PRICE	10,000	NET WEIGHT	2.0g
COLOR	To Love, Energy Pop, Sweet Boom Lucky Touch, Heart Feel	EXPIRATION DATE	36 M before opening 12 M after opening
TEXTURE	Liquid / Glossy	SKIN TYPE	All skin type
DESCRIPTION	<p><b>Plump, jelly-like shine</b> A tint with a single touch, delivering a plump, jelly-like shine</p> <p><b>Plump, vibrant color that stays true to its visible hue.</b> Buildable for a clean, vivid color that stays true to its original hue, even with multiple layers.</p> <p><b>Long-lasting glossy finish</b> High-gloss oil volume system that creates a clear, plump jelly-like shine that intensifies over time</p>		
HOW TO	Take an appropriate amount and gently apply from the center of the lips, blending outward..		
KEY WORDS	#JellyCreamTexture #TangibleJellyGlow #LongLasting		



## PRODUCT INTRODUCTION

### LIP MAKE UP



## PRODUCT INTRODUCTION

### LIP MAKE UP

#### RIVER GLOW TINT

A crystal-clear, vibrant water-like tint that rises with clarity, just like sunlight reflecting on a river!



NAME	PEACH C River Glow Tint	CATEGORY	Tint
PRICE	17,000	NET WEIGHT	4g
COLOR	01 Hey Cherry 02 Tender Peach 03 Let's Grape 04 Breeze Fig	EXPIRATION DATE	36 M before opening 12 M after opening
TEXTURE	Liquid / Glossy	SKIN TYPE	All skin type
DESCRIPTION	<p><b>Vibrant Colors Like Freshly Squeezed Fruit Juice</b> One drop of pigment in a water gel formula! Refreshing and clear, like a water barrier is applied! The color payoff remains vibrant even after multiple layers</p> <p><b>Long-lasting, high-pigment tint without any compromise!</b> Glow-lasting tint that stays vibrant and moisturized, just like the first application, for long-lasting wear</p> <p><b>Gloss that doesn't fade over time</b> Gloss fades without moisture evaporating, and the color stays true, providing a long-lasting high-pigment texture without any compromise</p>		
HOW TO	Take an appropriate amount and gently apply from the center of the lips, blending outward.		
KEY WORDS	#WaterTint #GlowLasting #WaterGelBase		



## PRODUCT INTRODUCTION

### LIP MAKE UP



## PRODUCT INTRODUCTION

### LIP MAKE UP

#### BLURRY FILTER TINT

Activate your personal filter,  
with the Comfort Blur Tint that smoothly and  
seamlessly adheres to your lips



NAME	PEACH C Blurry Filter Tint	CATEGORY	Tint
PRICE	15,000	NET WEIGHT	6.5g
COLOR	01 No Filter Peach 02 Newtro Chilli 03 Cloudy Mauve 04 Flash Red 05 Analog Rosy	EXPIRATION DATE	36 M before opening 12 M after opening
TEXTURE	Liquid / Semi-matte	SKIN TYPE	All skin type
DESCRIPTION	<p><b>Pick your color freely to match the vibe you want</b> A versatile tone-on-tone color palette, from lip base to accent color.</p> <p><b>A slim-fit texture that comfortably adheres to the lips without causing dryness</b> Comfortable blur that adheres lightly without any heaviness, as if nothing is applied.</p> <p><b>A soft blur finish that blends effortlessly, as if naturally blurred</b> A long-lasting formula that fills in lip lines smoothly, fixing the color itself</p>		
HOW TO	Take an appropriate amount and gently apply from the center of the lips, blending outward.		
KEY WORDS	#ToneLockFilter #BlurringAdherence #SlimFit #LongLasting		



## PRODUCT INTRODUCTION

### LIP MAKE UP

#### EASY MATTE LIPSTICK

As light as air, with high-pigment adherence



NAME PEACH C Easy Matte Lipstick

CATEGORY Lip stick

PRICE 15,000

NET WEIGHT 3.7g

COLOR 01 Spring Coral 02 Retro Peach  
03 Scarlet Pink 04 Tangerine Red  
05 Dahlia Red 06 Rusty Rose  
07 Cinnamon Brick

EXPIRATION DATE 36 M before opening  
12 M after opening

TEXTURE Stick type / Semi-matte

SKIN TYPE All skin type

**Color instantly applies as it touches the lips**  
High-pigment color for instant, one-swipe coverage

**Glides on smoothly with a light, airy feel for effortless color application**  
Melting formula that applies smoothly and moisturizes without highlighting dry patches

**Sliding color payoff that finishes matte without any stickiness.**  
High-adhesion texture that fills in the fine lines of your lips without clumping

HOW TO Apply directly to the lips or use a brush to spread it evenly on your lips

KEY WORDS #SemiMatte #HighPigment #HighAdhesion





# MAKE UP TOOLS



## PRODUCT INTRODUCTION

### MAKE UP TOOLS

#### DAILY MINI MAKE UP BRUSH

With the finely cut synthetic bristles, apply effortlessly and professionally anywhere.



NAME	PEACH C Daily Mini Make up Brush	CATEGORY	Make up brush
PRICE	28,000 / 6 pcs	SKIN TYPE	All skin type
DESCRIPTION	<p><b>The mini-sized brush fits in your pouch, making it easy to carry and use anywhere!</b> A compact set with six versatile brushes for various uses!</p> <p><b>Soft and lightweight touch for a clear and radiant finish.</b> A lush and soft synthetic brush that helps achieve a natural, seamless application.</p> <p><b>With precise cutting designed for different uses, even makeup beginners can achieve a professional look</b> No skills required - easily and comfortably follow each makeup step.</p>		
HOW TO	Apply an appropriate amount of makeup product onto the brush and gently blend it onto the desired area.		
KEY WORDS	#MiniSize #PremiumSyntheticBristles #DailyPouchEssential		

## PRODUCT INTRODUCTION

### MAKE UP TOOLS

#### TUNING BRUSH SET

A brush set that redefines your features with a soft and delicate touch.



NAME	PEACH C Tuning Brush Set	CATEGORY	Make up brush
PRICE	20,000 / 3 pcs	SKIN TYPE	All skin type
DESCRIPTION	<p><b>A soft synthetic bristle brush that applies color evenly without clumping in just one touch.</b> Precisely cut brushes for each purpose deliver rich and vibrant color without irritation.</p> <p><b>A practical set with only the essential brushes for makeup.</b> A carefully curated set featuring only the essential brushes for precise makeup application.</p> <p><b>Includes a clear pouch for hygienic and convenient storage.</b> Comes with a dedicated brush pouch for safe storage without worrying about bristle deformation.</p>		
HOW TO	Pick up an appropriate amount of makeup product with the brush and apply it softly to the desired area		
KEY WORDS	#BasicSize #PremiumSyntheticBristles #MakeupEssential		



# GWP LIST



## PRODUCT INTRODUCTION

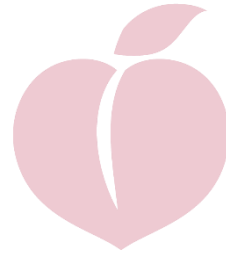
### MAKE UP TOOLS

#### PEACH HAIR ROLLER

Peach Pattern Hair Roll for  
Effortlessly Achieving Voluminous Bangs



NAME	PEACH C Peach Hair Roller	CATEGORY	Hair Accessories
PRICE	2 pcs	SKIN TYPE	All skin type
DESCRIPTION	<p><b>An Iconic Peach Pattern Design That Sparks the Desire to Own</b> A Peach Pattern That Captures the Brand Identity, Making It Even More Lovable</p> <p><b>Easy Hair Styling with Soft Velcro Fabric</b> Secures Gently Without Tugging or Pinching the Hair</p> <p><b>Enhances Bangs Volume While Being Compact and Portable</b> 6mm Hair Roll for Creating Natural Voluminous Styling</p>		
HOW TO	<ol style="list-style-type: none"><li>1. Brush completely dry bangs and roll the hair onto the hair roll.</li><li>2. After some time has passed, gently remove the hair roll to achieve the desired style..</li></ol>		
KEY WORDS	#TrendyItem #BangsHairRoll		



THANK  
YOU.

Contact [admin@peachc.co.kr](mailto:admin@peachc.co.kr)